

FACTS ON

Obed Lake Provincial Park

Obed Lake Provincial Recreation Area (PRA) was expanded by over eight square kilometres (800 hectares) to include the adjacent lakes and uplands. Now 34 square kilometres (3,401 hectares), this new Provincial Park is situated in the Lower Foothills, northeast of Hinton.

This Provincial Park contributes to the preservation goal of Alberta's Parks and Protected Areas program by preserving the adjacent lakes and wetlands of the Lower Foothills.

Site Description and Location

Obed Lake Provincial Park is located 34 kilometres northeast of Hinton. Access to the Park is from the Yellowhead Highway (Hwy. 16). The highest points on both the Canadian National rail line and the Yellowhead Highway system are near Obed Lake Provincial Park.

The area surrounding Obed Lake Provincial Park displays characteristics of both Foothills and Boreal Forest Natural Regions, which support mixed wood forests of lodgepole pine, aspen poplar and white spruce.

Significant Features

Obed Lake Provincial Park encompasses the lake, its shoreline and surrounding riparian habitat, and also includes the former Obed Lake PRA.

The area contains a diversity of wetland and upland communities including black spruce-tamarack fens, mixed wood forests, and closed coniferous forests of lodgepole pine and black spruce. The area is important for wildlife, especially for elk and as an over wintering area for moose.

Surrounding lakes in the area also provide suitable habitat for trumpeter swans.

The Park protects an important wetland complex in the central portion of the Lower Foothills.

Recreational Activities

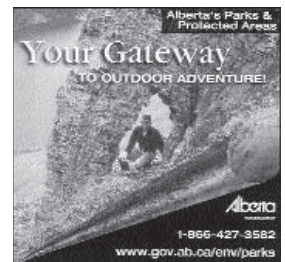
Obed Lake is situated in a beautiful area that many nature lovers and outdoor enthusiasts will appreciate. The 7-site campground and 4-site day-use area provides a rest stop for highway traffic as well as access to the lake. Fishing enthusiasts have been coming to this site for years, trying their luck in both the summer and winter months. The lake contains brown trout, perch and suckers.

A fish-cleaning stand is located near the main dock. This quiet lake is ideal for paddling around and finding peace and quiet.

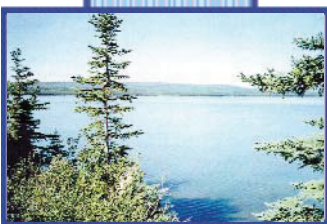
Although hunting and ATV use occurred in the former Obed Lake PRA, these activities are not permitted in Obed Lake Provincial Park.

To learn more about Alberta's parks and protected areas, visit your "Gateway to Outdoor Adventure".

This dynamic website is a trip planning tool that will allow public access to the Park Sites and Facilities database



For more information, contact (780) 723-8244 in Edson. To call toll-free from anywhere in Alberta, dial 310-0000 and enter the number.



April 1, 2001

ISBN No. 0-7785-1701-2

Pub No. I/881

2007 Alberta Parks 75

Alberta

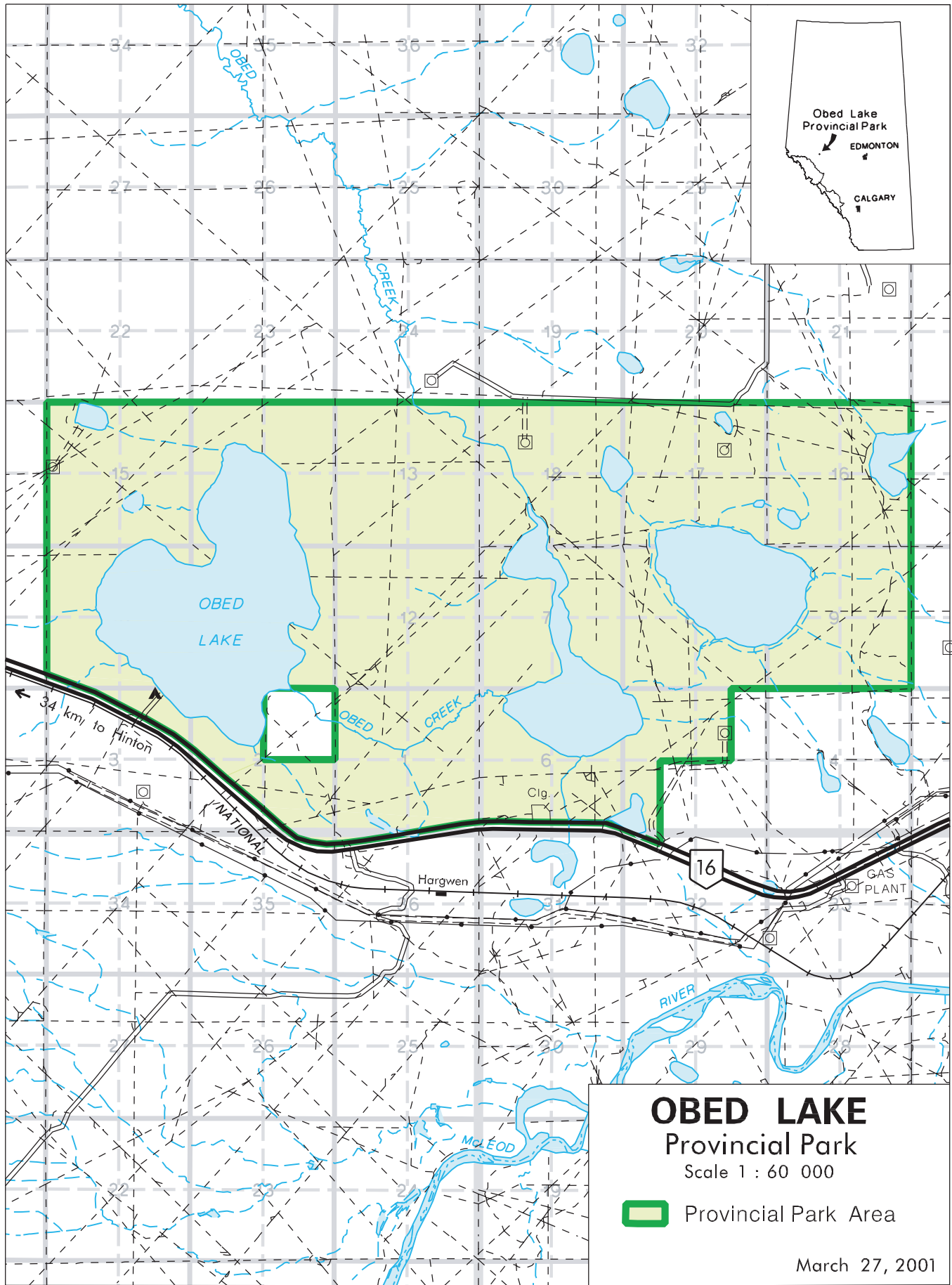
R 22

R 21



Tp 53

Tp 53



OBED LAKE

Provincial Park

Scale 1 : 60 000

 Provincial Park Area

March 27, 2001